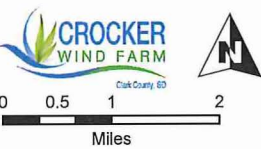


- ⊕ Cemetery
- Participating Residential Structures within 1 Mile
- Non-Participating Residential Structures within 1 Mile
- Microwave Beam Path
- Transmission
- Pipeline
- Private Airstrip



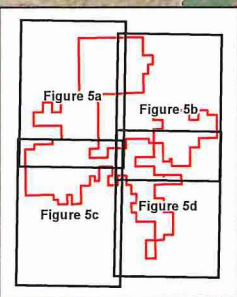
Imagery Source: 2015 Color FSA
Data Source: Geronimo Energy, MN DNR, USFWS, Census, Comsearch

**Figure 5
Project Setbacks**

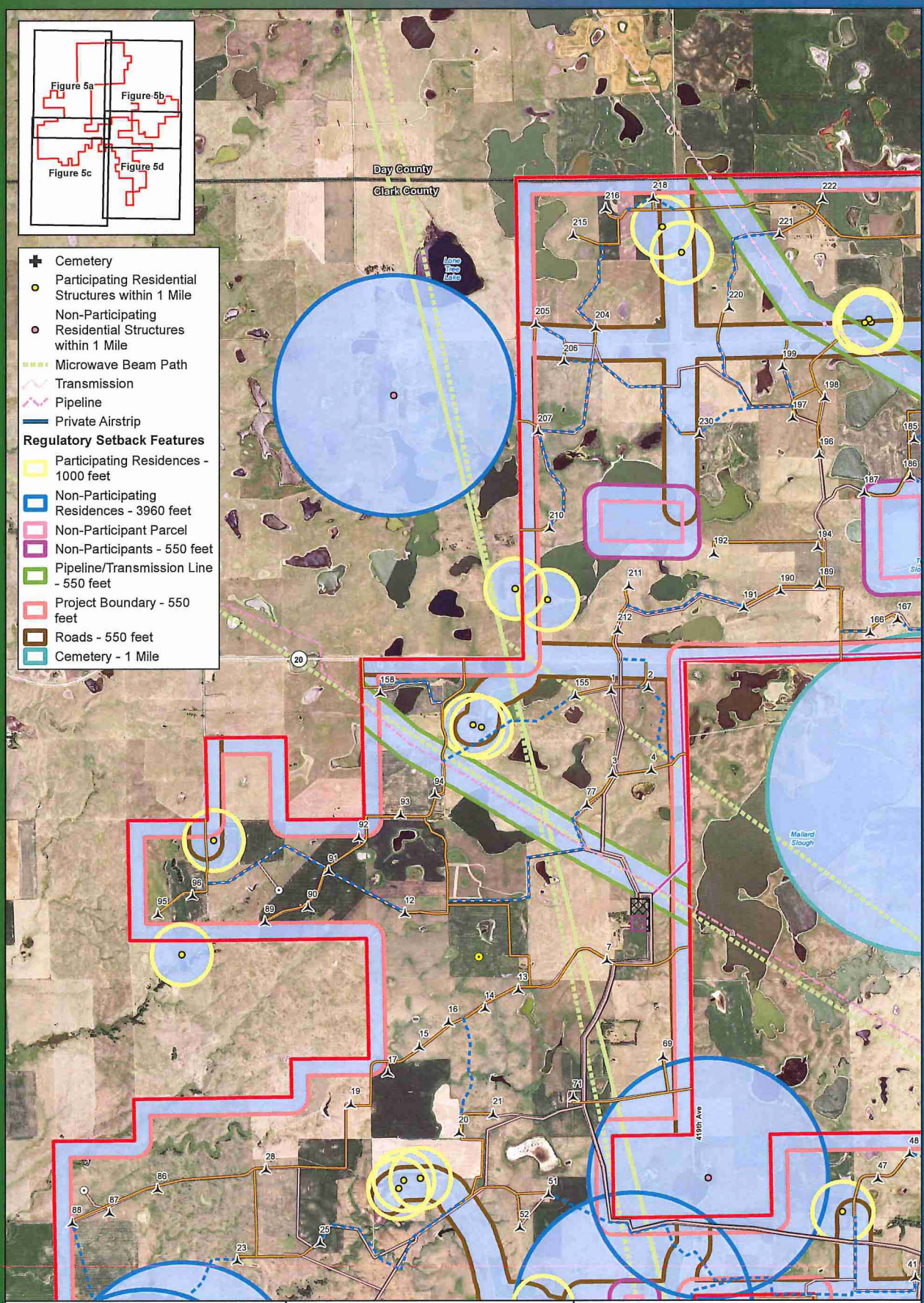
**Crocker Wind Farm
Clark County, SD**

45.079602, -97.845696
CROCKER000565

- ▲ Preliminary Turbine Location
 - Temporary Met Tower
 - Preliminary Permanent Met Tower
 - Project Area Boundary
 - ⊠ Project Substation
 - ⊞ O&M Facility
 - ⊞ Interconnect Switchyard
 - ⊞ Preliminary Staging Area
 - Interconnection 345 kV Transmission Line
 - Preliminary Access Road
 - Preliminary Collection Line
 - Preliminary Crane Path
 - Setbacks
- Note:
1. Turbine numbering is not sequential.
2. Only setbacks that intersect the Project boundary are depicted.



- ✚ Cemetery
- Participating Residential Structures within 1 Mile
- Non-Participating Residential Structures within 1 Mile
- Microwave Beam Path
- Transmission
- Pipeline
- Private Airstrip
- Regulatory Setback Features**
- Participating Residences - 1000 feet
- Non-Participating Residences - 3960 feet
- Non-Participant Parcel
- Non-Participants - 550 feet
- Pipeline/Transmission Line - 550 feet
- Project Boundary - 550 feet
- Roads - 550 feet
- Cemetery - 1 Mile



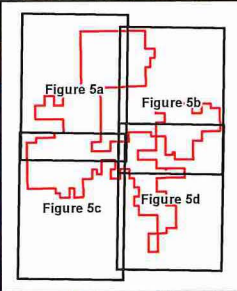
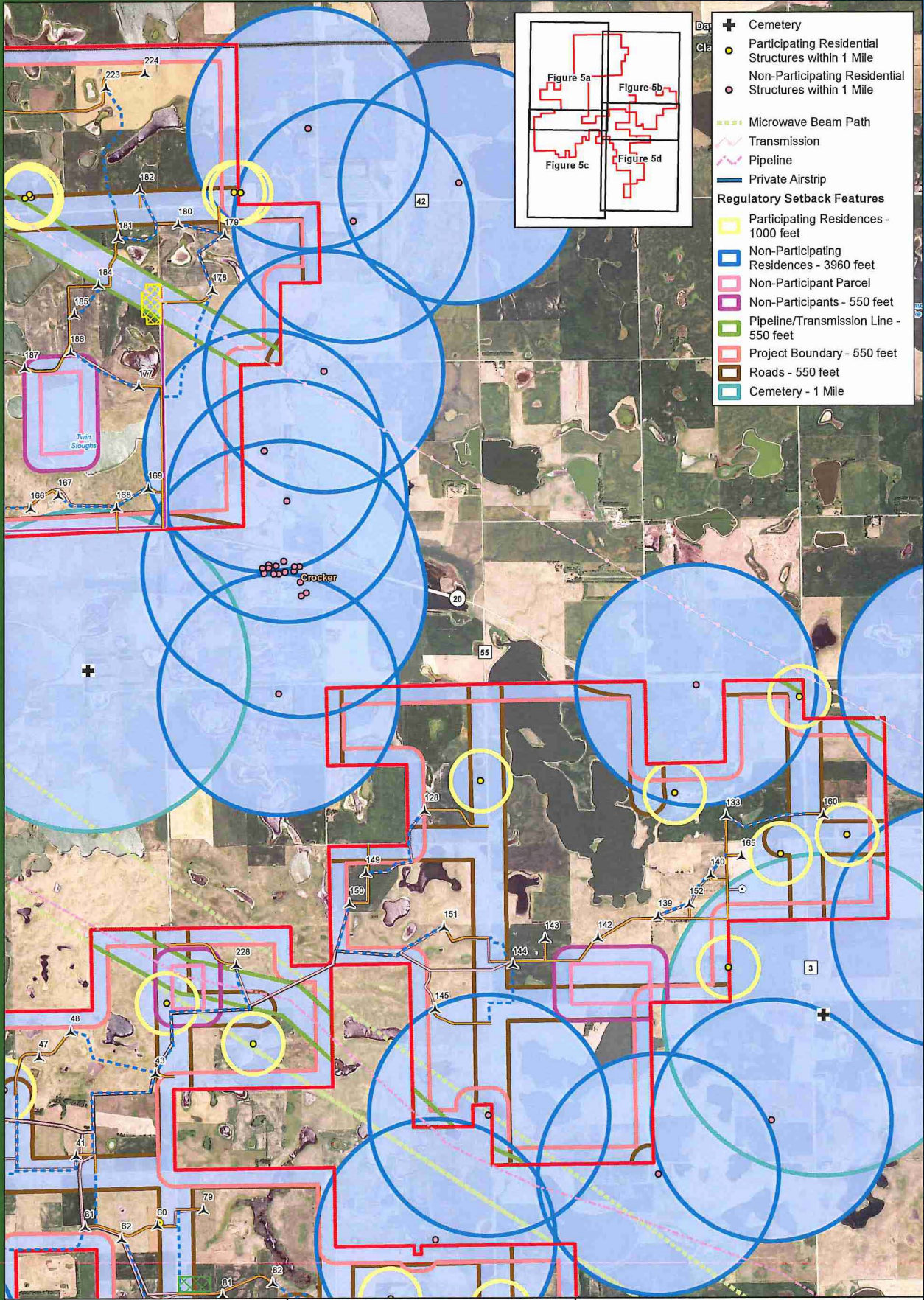
Clark County, SD

Figure 5a
Project Setbacks (Detailed)

Crocker Wind Farm
Clark County, SD
45.079602, -97.845696

CROCKER000566
03/12/2018

- ▲ Preliminary Turbine Location
 - Temporary Met Tower
 - Preliminary Permanent Met Tower
 - Project Area Boundary
 - Project Substation
 - O&M Facility
 - Interconnect Switchyard
 - Preliminary Staging Area
 - Interconnection 345 KV Transmission Line
 - Preliminary Access Road
 - Preliminary Collection Line
 - Preliminary Crane Path
 - Setbacks
- Note:
1. Turbine numbering is not sequential.
2. Only setbacks that intersect the Project boundary are depicted.



- ✚ Cemetery
- Participating Residential Structures within 1 Mile
- Non-Participating Residential Structures within 1 Mile
- Microwave Beam Path
- Transmission
- Pipeline
- Private Airstrip
- Regulatory Setback Features**
- Participating Residences - 1000 feet
- Non-Participating Residences - 3960 feet
- Non-Participant Parcel
- Non-Participants - 550 feet
- Pipeline/Transmission Line - 550 feet
- Project Boundary - 550 feet
- Roads - 550 feet
- Cemetery - 1 Mile

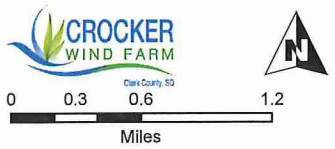


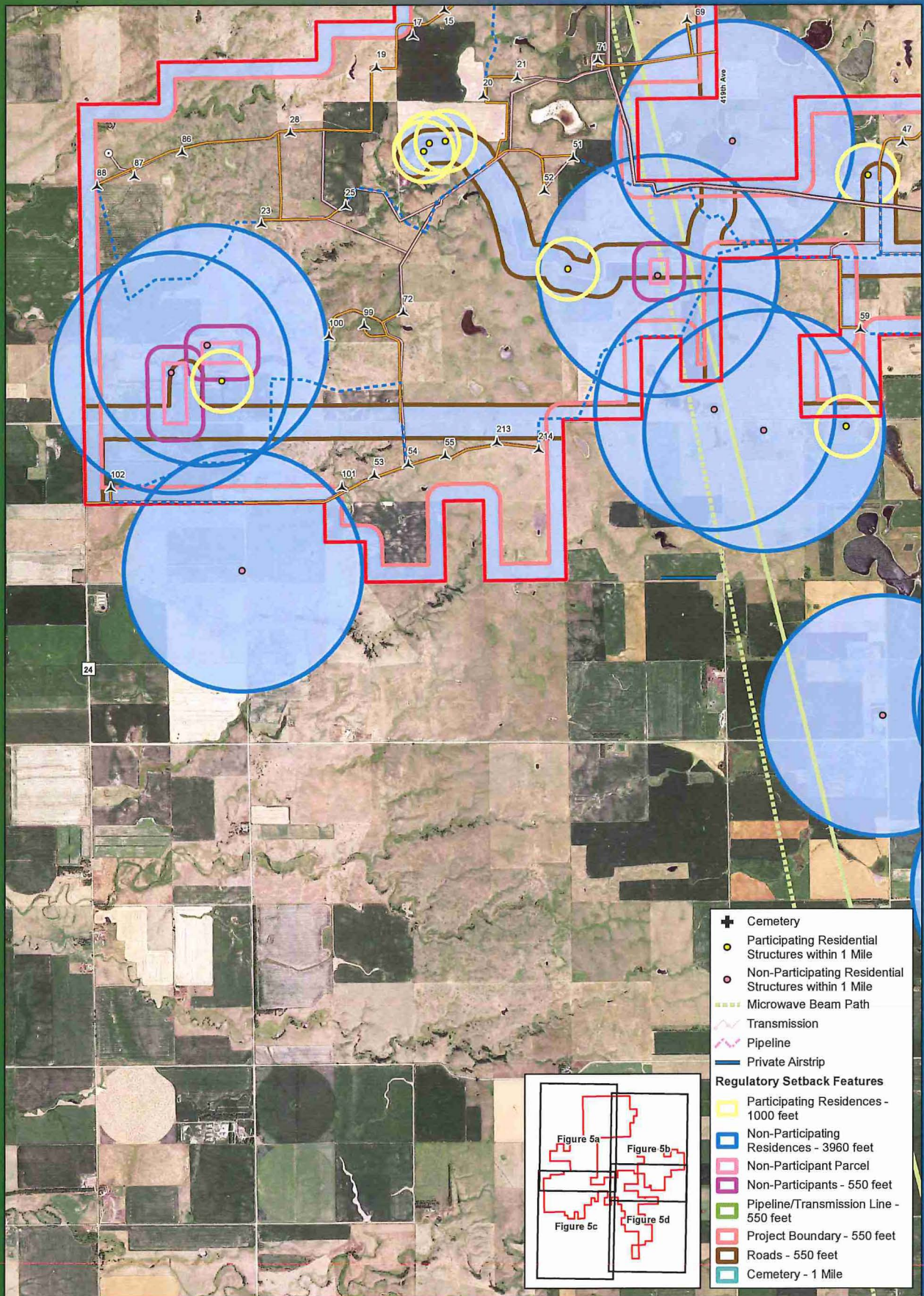
Figure 5b
Project Setbacks (Detailed)

Crocker Wind Farm
Clark County, SD
45.079602, -97.845696

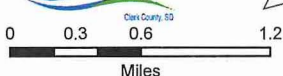
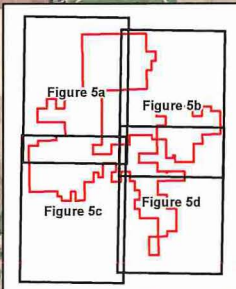
CROCKER000567
03/12/2018

- ▲ Preliminary Turbine Location
- Temporary Met Tower
- Preliminary Permanent Met Tower
- Project Area Boundary
- Project Substation
- O&M Facility
- Interconnect Switchyard
- Preliminary Staging Area
- Interconnection 345 kV Transmission Line
- Preliminary Access Road
- Preliminary Collection Line
- Preliminary Crane Path
- Setbacks

Note:
1. Turbine numbering is not sequential.
2. Only setbacks that intersect the Project boundary are depicted.



- ✚ Cemetery
- Participating Residential Structures within 1 Mile
- Non-Participating Residential Structures within 1 Mile
- Microwave Beam Path
- Transmission
- Pipeline
- Private Airstrip
- Regulatory Setback Features**
- Participating Residences - 1000 feet
- Non-Participating Residences - 3960 feet
- Non-Participant Parcel
- Non-Participants - 550 feet
- Pipeline/Transmission Line - 550 feet
- Project Boundary - 550 feet
- Roads - 550 feet
- Cemetery - 1 Mile



Imagery Source: 2015 Color FSA
Data Source: Geronimo Energy, US Census, SD DOT

**Figure 5c
Project Setbacks (Detailed)**

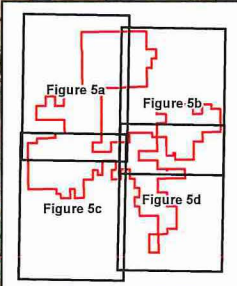
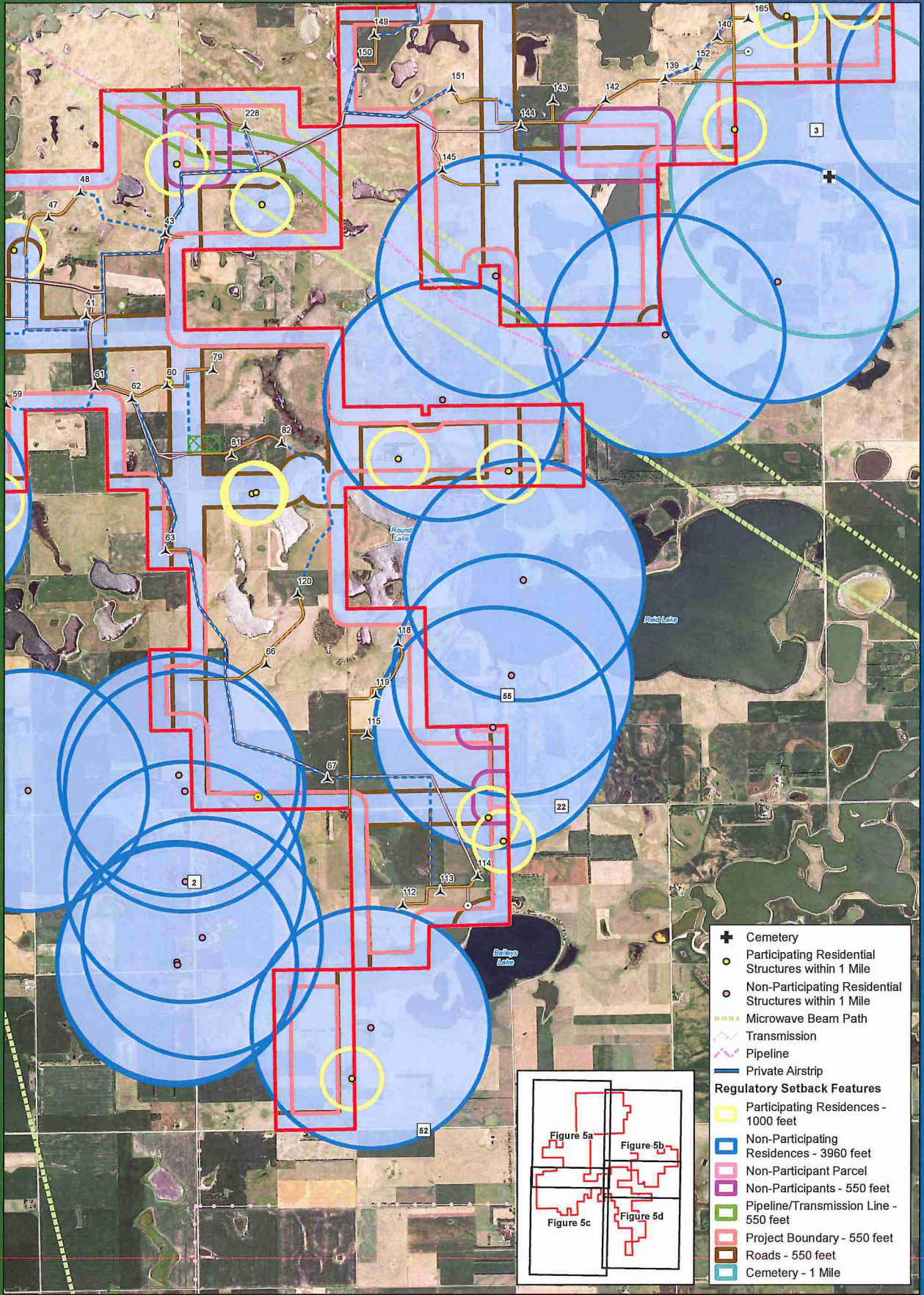
**Crocker Wind Farm
Clark County, SD
45.079602, -97.845696**

CROCKER000568

03/12/2018

- ▲ Preliminary Turbine Location
- Temporary Met Tower
- Preliminary Permanent Met Tower
- Project Area Boundary
- Project Substation
- O&M Facility
- Interconnect Switchyard
- Preliminary Staging Area
- Interconnection 345 kV Transmission Line
- Preliminary Access Road
- Preliminary Collection Line
- Preliminary Crane Path
- Setbacks

Note:
1. Turbine numbering is not sequential.
2. Only setbacks that intersect the Project boundary are depicted.



- ✚ Cemetery
- Participating Residential Structures within 1 Mile
- Non-Participating Residential Structures within 1 Mile
- Microwave Beam Path
- Transmission Pipeline
- Private Airstrip
- Regulatory Setback Features**
- Participating Residences - 1000 feet
- Non-Participating Residences - 3960 feet
- Non-Participant Parcel
- Non-Participants - 550 feet
- Pipeline/Transmission Line - 550 feet
- Project Boundary - 550 feet
- Roads - 550 feet
- Cemetery - 1 Mile

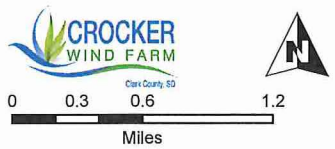


Figure 5d
Project Setbacks (Detailed)

Crocker Wind Farm
Clark County, SD
45.079602, -97.845696

CROCKER000569

03/12/2018

- ▲ Preliminary Turbine Location
- Temporary Met Tower
- Preliminary Permanent Met Tower
- Project Area Boundary
- Project Substation
- O&M Facility
- Interconnect Switchyard
- Preliminary Staging Area
- Interconnection 345 kV Transmission Line
- Preliminary Access Road
- Preliminary Collection Line
- Preliminary Crane Path
- Setbacks

Note:
1. Turbine numbering is not sequential.
2. Only setbacks that intersect the Project boundary are depicted.